

***Shababi*: Home-based Healthcare Program for Young People of Determination**

PHTT 2019 Fujairah Team



Challenge: Access to Healthcare for young PoD

Unintended Neglect and subsequent Medical Escalation of Stable People of Determination

Due to the challenges:

- Time constraints
- Lack of Education
- Stigma
- Inadequate transportation
- Difficulty identifying services



The *Shababi* Program

“We come to you”

Long-term home-based personalized healthcare for
young people of determination



The Program - Scope of Service

Constant and committed home visits for:

- ❑ Addressing routine services and medical procedures to people of determination
- ❑ Providing a constant source of education towards parents or primary caregivers
- ❑ Providing adequate emergency transportation towards hospitals if required
- ❑ Introducing external medical resources when needed and facilitating the transition to the next phrase of healthcare



The Program

Service Provider

- ❑ Mobile medical teams consisted of nurses, specialists, and counselors
- ❑ Trained to manage chronic illness and disabilities and communicate using picture exchange communication system (PECS) and Makaton
- ❑ Each team is built up to meet specific needs

Targets

- ❑ Young UAE National people of determination (10-18 year olds) and their families
- ❑ Information about them are gathered from Ministry of Community Development's registration system

Level

2 Areas



To be extended after 1 year

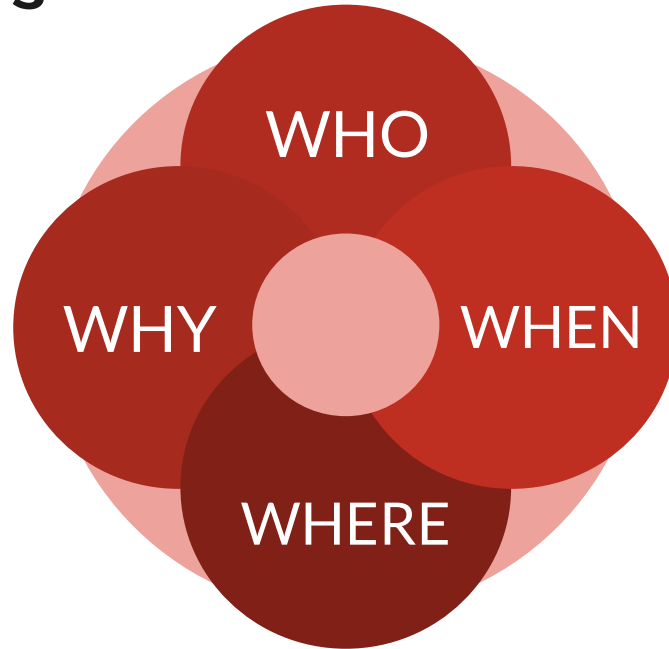


Timeline:





Stakeholders





Stakeholders - WHO

EXTERNAL

- ❑ DOH
- ❑ ZHO
- ❑ SEHA
- ❑ People of determination
- ❑ ADEK(Schools): administrators, teachers, nurses

INTERNAL

- ❑ Trained Medical Providers - nurses, psychologists, physicians with Makaton, PECS, Sign language training, behavioral management training.
- ❑ **BONUS (TWO in ONE)**



WHY



WHEN

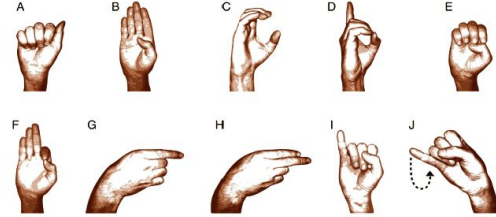
6am-8pm



WHERE



Resources



DATA-BASES



اللغة العربية



Goals

- ❑ Provide access .
- ❑ Reduce avoidable complication
- ❑ Raise awareness
- ❑ Educate caregivers
- ❑ Break social stigma
- ❑ Eventual independence of caregivers

Evaluation

Medical record before and after the implantation of the project.



Questionnaires given to the care givers and staff for service satisfaction and coordination





What's new

Seha mobile clinic	Shababi
Not personalized	Personalized
Mobility challenges	At home healthcare
Not one on one	One on one session
No education involved	Education and awareness is provided



Weaknesses

- ❑ **High turnover rate of doctors & nurses**
Consistency and communication
- ❑ **Funding**
be local population focused but will be expanded
- ❑ **Age group cut off**
 - ❑ A 1 to 3 years of transition period
 - ❑ transferred documents

Questions time
